

On the structure of the *Phytophthora* α 1 mating hormone: synthesis and comparison of four candidate stereoisomers

Reena Bajpai, Fanglong Yang and Dennis P. Curran*

Department of Chemistry, University of Pittsburgh, Pittsburgh, PA 15260, USA

Received 23 August 2007; revised 6 September 2007; accepted 7 September 2007

Available online 12 September 2007

Dedicated to the memory of Professor Yoshihiko Ito, 1937–2006

Abstract—Two two-compound mixtures of candidate structures for the *Phytophthora* α 1 mating hormone have been synthesized. The mixtures were designed to have differing configurations at C3, but proved to be identical. This suggests that epimerization occurred at C3, and comparison with the data for the natural samples suggest that this is also a mixture of isomers.
© 2007 Elsevier Ltd. All rights reserved.

Phytophthora, derived from Greek ‘the plant destroyer’, is a parasitic genus of organism whose members live in the soil and attack the roots and basal stems of plants. These fungi-like parasites do considerable damage to assorted hosts.¹ For example, *Phytophthora infestans* was responsible for the blight that precipitated the Irish potato famine in the mid-19th century. Other *Phytophthora* induce rot in plants as diverse as strawberries, tomatoes, tobacco, azaleas, coconut trees, and oak trees, among others. The control of these organisms remains difficult.

Phytophthora are classified as homothallic and heterothallic depending on whether they reproduce asexually or sexually. The sexual reproduction of heterothallic phytophthora is regulated by hormone secretion,² and in 2005 Ojika and co-workers isolated about 1 mg of hormone α 1 from the A1 mating type of *Phytophthora nicotianae*.³ Based on spectroscopic analysis of this sample and its bis-4-bromobenzoate derivative **2**, Ojika proposed that the two-dimensional structure (constitution) of hormone α 1 was 1,11,16-trihydroxy-3,7,11,15-tetramethylhexadecan-4-one **1** (Fig. 1). With four stereocenters **1** has 16 stereoisomers, but no information on the three-dimensional structure (configuration) of **1** is yet available.

Assigning the configuration of **1** is especially an important goal because Ojika has proposed that **1** is a univer-

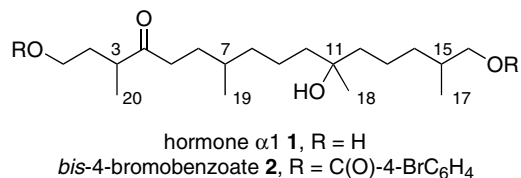


Figure 1. Two-dimensional structure of the *Phytophthora* α 1 mating hormone and its bis-4-bromobenzoate.

sal hormone for all heterothallic species of *Phytophthora*. Yajima and co-workers recently made a mixture that presumably contains all 16 stereoisomers of **1**, and found that this mixture exhibited about 20% of the oospore-inducing activity of the natural sample.⁴ They also commented that it was impossible to discriminate between the diastereomers of **1** and **2** by NMR analysis.

We have recently used techniques of fluororous mixture synthesis to make stereoisomer libraries of a number of natural products.^{5,6} As a prelude to employing this technique to make a library of α 1 hormones, we decided to execute a traditional synthesis of the hormone. The goals of this work were: (1) to put in place a route that could subsequently be used for fluororous mixture synthesis, (2) to prove the constitution of **1**, and (3) to provide the preliminary information about configuration of **1**.

Herein we communicate the synthesis of four isomers of **1**. Like Yajima,⁴ we confirm the constitution of **1**. We

* Corresponding author. Tel.: +1 412 624 8240; fax: +1 412 624 9861; e-mail: curran@pitt.edu

also find the stereoisomers difficult to differentiate spectroscopically from each other and the natural product; however, we do find clear indications that there are small but meaningful differences in the spectra of some diastereomers. Based on our analysis, we suggest that the natural sample may not be a single isomer. We comment on the problems that need to be solved to provide a rigorous assignment of the configuration of **1**.

The latent symmetry of the C6–C16 fragment of **1** makes the retrosynthetic cleavage of the C5–C6 bond especially attractive. As summarized in Figure 2, we envisioned that ene diyne **3** could be readily converted to **1** by hydrogenation and deprotection. Now cleavage of the C5–C6 bond of **3** provides a simple ketoalcohol **4** (C1–C5) and a symmetrical protected triol **5** (C6–C16). Triol **5** has four stereoisomers whose syntheses are facilitated by symmetry (two have a mirror plane while two have ‘pseudo-C2 symmetry’⁷). But using the symmetry in this way exacts a price because the symmetry of fragment **5** must be broken prior to the union of the two fragments.⁷ Purposefully refusing to pay that price, we decided to generate a two-compound mixture during the symmetry-breaking step of the synthesis to see if it were possible at any stage to differentiate or perhaps even separate the stereoisomers.

This unconventional decision was driven in part by our expectation that it might be difficult to decide whether an individual synthetic stereoisomer of **1** matched the natural sample or not. If we made two stereoisomers of **1** as a mixture, would we be able to differentiate them from each other? Assuming (without basis) that the natural product is a single isomer, then at least one of the two samples of the mixture (possibly both) would not be the natural product. Would it be possible to differentiate that isomer from the natural product?

Both enantiomers of protected ketoalcohol **4** were synthesized by standard Evans aldol methods,⁸ and the

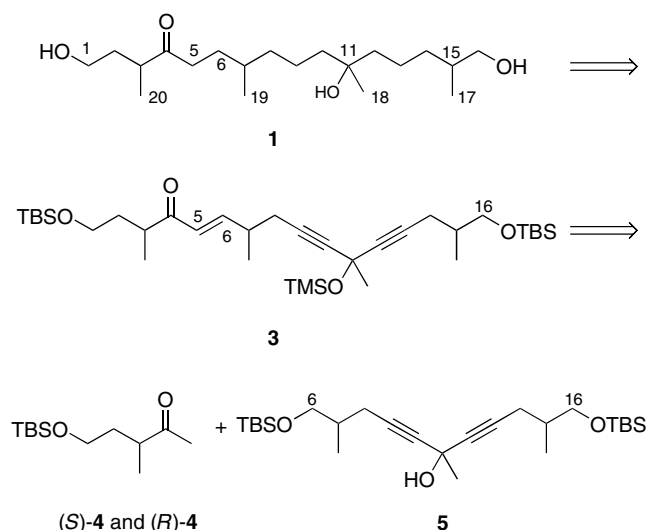
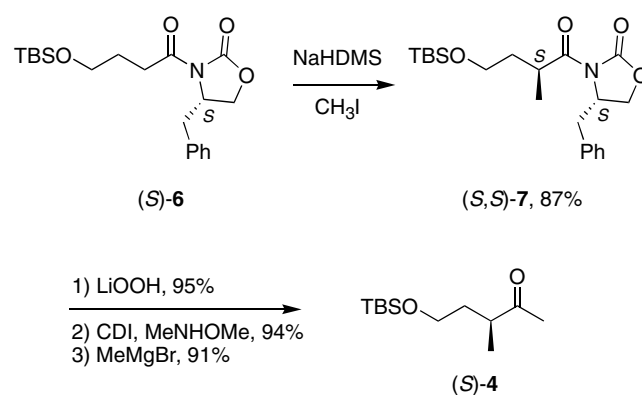


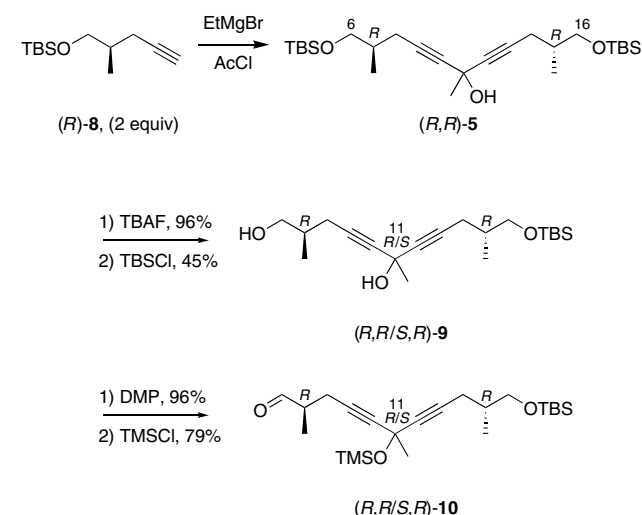
Figure 2. Retrosynthetic analysis of **1** based on the latent symmetry of the C6–C16 fragment.



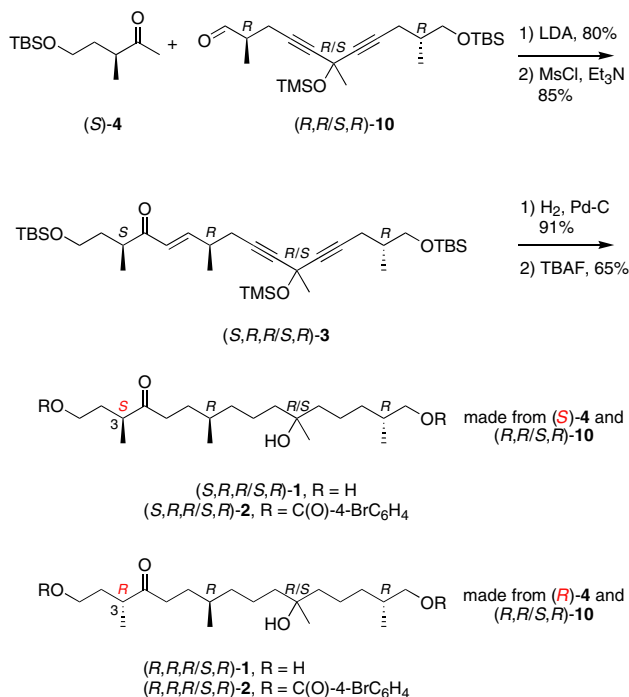
Scheme 1. Synthesis of the C1–C5 fragment **4**.

synthesis of the **(S)-4** enantiomer is summarized in Scheme 1. Alkylation of readily available **(S)-6** (see Supplementary data) with NaHMDS and CH₃I gave **(S,S)-7** in 87% yield. Hydrolysis with lithium hydroperoxide, conversion to the Weinreb amide and addition of CH₃MgBr provided **(S)-4** in good overall yield.⁹ Likewise, **(R)-4** was made by the same route starting from **(R)-6** (not shown). Chiral GC analysis showed that the samples of **4** were enantiopure.

Starting from readily available **(R)-8** (see Supplementary data), we prepared a two-compound mixture of C6–C16 fragment **10** as summarized in Scheme 2. Deprotonation of 2 equiv of **(R)-8** and addition of 1 equiv acetyl chloride provided pseudo-C2 symmetric alcohol **(R,R)-5**. Removal of both TBS groups with TBAF gave a triol whose symmetry was broken in a non-selective fashion by statistical monosilylation. This provided an inseparable mixture of two compounds **9** whose configurations differed at C11 in 45% yield.¹⁰ Oxidation of the free primary alcohol of **9** with the Dess–Martin periodinane¹¹ followed by silylation of the remaining tertiary alcohol with TMSCl provided **10**, again as an inseparable mixture of epimers at C11.



Scheme 2. Synthesis of the C6–C16 fragment **10**.



Scheme 3. Fragment coupling and completion of the synthesis of **1**.

The coupling of the two fragments (Scheme 3) was accomplished by aldol reaction of (*S*)-4 and (*R,R/S,R*)-10 (LDA, THF, 80%), followed by mesylation and in situ dehydration (MsCl, Et₃N, 85%). The resulting ene diyne (*S,R,R/S,R*)-3 must again be a mixture of two isomers. The alkene and alkynes were saturated by catalytic hydrogenation to provide a protected ketotriol, which was then deprotected with TBAF in THF at room temperature to give the first two-compound mixture (*S,R,R/S,R*)-1. The second two-compound mixture (*R,R,R/S,R*)-1 was prepared in the same way by coupling (*R*)-4 with (*R,R/S,R*)-10, then taking the coupled product through the same sequence of steps. Both samples of **1** were converted to the bis-4-bromobenzoate derivatives **2** by standard acylation (77%).

After detailed characterization, we then compared the spectroscopic data of the two two-compound mixtures of **1** with each other and with those reported for the natural product. Ojika and co-workers commented that the spectra of the natural product ‘suggested the presence of unknown trace components’,³ and we saw similar small resonances (<10%) in our spectra. Accordingly, we conclude that these do not come from an impurity per se, but instead arise from hemiacetal **11** (addition of OH at C1 to ketone at C4) present at equilibrium (Fig. 3).¹²

The 500 MHz ¹H NMR spectra of the two synthetic samples of **1** were substantially identical, and there was no indication that these samples were isomer mixtures. Further, both the spectra were substantially identical to that of the natural sample. The 150 MHz ¹³C NMR spectra of the two samples did show doubling of a few resonances (see Supplementary data), but the

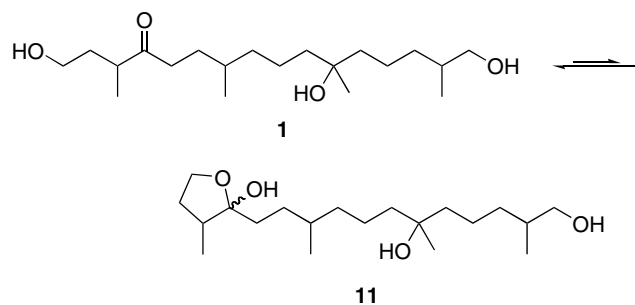


Figure 3. Proposed ketoalcohol–hemiacetal equilibrium.

spectra of the bis-4-bromobenzoate samples **2** were more informative.

Though the purified bis-4-bromobenzoate samples **2** exhibited a single spot on standard silica TLC and a single peak on reverse phase HPLC analysis, there were clear suggestions that they were not single components. The ¹H NMR spectra of the two synthetic samples and the natural bis-4-bromobenzoate sample were substantially identical. All three spectra showed single resonances for all non-overlapping protons, with an important exception. The methyl group at C19 (bonded to C7) appeared as an apparent triplet, which we interpret as two overlapping doublets (δ 0.83 and 0.82), each arising from a different stereoisomer. The natural sample also showed this feature, and this suggests that it may not be isomerically pure.

The ¹³C spectra of the two synthetic samples **2** showed single resonances for many of the carbons. However, some of the resonances were clearly doubled, and one (C18) was even quadrupled. Figure 4 summarizes the doubled and quadrupled resonances (see Supplementary data for a tabulation and overlaid, expanded spectra). In addition, HPLC analysis on a Chiralcel OD column showed four overlapping peaks for both samples of **2**.

Taken together, these results suggests that epimerization occurred at some point during the synthesis and that the final products **1** and **2** are four-isomer mixtures rather than the expected two-isomer mixtures. We suggest that epimerization at C3 occurred during the aldol/elimination sequence (or thereafter), and this would mean that the two samples of **1** are identical. So far, all data that we have collected on the samples show them to be identical.

This work helps to advance the stereostructure assignment of the hormone α 1. The ¹H NMR spectra of the

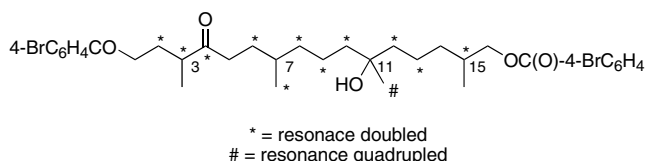


Figure 4. Doubled and quadrupled ¹³C NMR resonances of the two samples of **2**.

isomers of **1** that we have made are identical, while the ^{13}C spectra are very similar but not identical. The spectra of the bis-4-bromobenzoate derivatives are better resolved and both ^1H and ^{13}C NMR spectra show small differences for stereoisomers. Because some of these differences also appear in the bis-4-bromobenzoate derived from the natural sample, it seems likely that sample is also a mixture of stereoisomers, probably at C3. Finally, the purposeful synthesis of mixtures of isomers at C11 did prove helpful in looking for differences in spectra. But it is probably not a good idea for an expanded synthesis of a stereoisomer library by fluororous mixture synthesis or other methods because it did not prove practical to separate the isomers at any stage and because of the added complication posed by the observed epimerization at C3. To make a stereoisomer library would require a stereoselective synthesis of each isomer.

Note added in proof

Ojika et al.¹³ have just provided additional evidence that a natural hormone is a mixture of stereoisomers.

Acknowledgments

We thank the National Institute of General Medical Science of the National Institutes of Health for funding of this work. We also thank Professor M. Ojika and Dr. A. Yajima for sending copies of the NMR spectra of their samples.

Supplementary data

Contains full experimental and compound characterization details, along with copies of the NMR spectra of **1** and **2** and a tabular listing of resonances (78 pages). Supplementary data associated with this article can be found, in the online version, at doi:10.1016/j.tetlet.2007.09.054.

References and notes

- (a) Erwin, D. C.; Bartnicki-Garcia, S.; Tsao, P. H. *Phytophthora: Its Biology, Taxonomy, Ecology, and Pathology*; American Phytopathological Society: St. Paul, Minn, 1983; (b) Fry, W. E.; Goodwin, S. B. *Bioscience* **1997**, *47*, 363–371.
- Chern, L. L.; Tang, C. S.; Ko, W. H. *Bot. Bull. Acad. Sin.* **1999**, *40*, 79–85.
- Qi, J.; Asano, T.; Jinno, M.; Matsui, K.; Atsumi, K.; Sakagami, Y.; Ojika, M. *Science* **2005**, *309*, 1828.
- Yajima, A.; Kawanishi, N.; Qi, J.; Asano, T.; Sakagami, Y.; Nukada, T.; Yabuta, G. *Tetrahedron Lett.* **2007**, *48*, 4601–4603.
- Short overviews: (a) Zhang, W. *Arkivoc* **2004**, 101–109; (b) Curran, D. P. In *The Handbook of Fluorous Chemistry*; Gladysz, J. A., Curran, D. P., Horvath, I. T., Eds.; Wiley-VCH: Weinheim, 2004; pp 128–156.
- (a) Luo, Z. Y.; Zhang, Q. S.; Oderaotoshi, Y.; Curran, D. P. *Science* **2001**, *291*, 1766–1769; (b) Dandapani, S.; Jeske, M.; Curran, D. P. *Proc. Nat. Acad. Sci.* **2004**, *101*, 12008–12012; (c) Curran, D. P.; Zhang, Q. S.; Richard, C.; Lu, H. J.; Gudipati, V.; Wilcox, C. S. *J. Am. Chem. Soc.* **2006**, *128*, 9561–9573; (d) Curran, D. P.; Zhang, Q. S.; Lu, H. J.; Gudipati, V. *J. Am. Chem. Soc.* **2006**, *128*, 9943–9956; (e) Curran, D. P.; Moura-Letts, G.; Pohlman, M. *Angew. Chem., Int. Ed.* **2006**, *45*, 2423–2426; (f) Yang, F.; Newsome, J. J.; Curran, D. P. *J. Am. Chem. Soc.* **2006**, *128*, 14200–14205.
- Poss, C. S.; Schreiber, S. L. *Acc. Chem. Res.* **1994**, *27*, 9–17.
- Evans, D. A.; Takacs, J. M.; McGee, L. R.; Ennis, M. D.; Mathre, D. J.; Bartroli, J. *Pure Appl. Chem.* **1981**, *53*, 1109–1127.
- (a) Nahm, S.; Weinreb, S. M. *Tetrahedron Lett.* **1981**, *22*, 3815–3818; (b) Garg, N. K.; Caspi, D. D.; Stoltz, B. M. *J. Am. Chem. Soc.* **2004**, *126*, 9552–9553.
- The spectra of the two mixed isomers in these compounds were substantially identical, and no doubling of resonances was observed. However, in related compounds with saturated alkynes, two resonances for C11 and C18 could sometimes be observed in the ^{13}C NMR spectra.
- (a) Dess, D. B.; Martin, J. C. *J. Org. Chem.* **1983**, *48*, 4155–4156; (b) Denmark, S. E.; Fujimori, S. *Synlett* **2001**, 1024–1029.
- Cavicchioli, S.; Savoia, D.; Trombini, C.; Umani-Ronchi, A. *J. Org. Chem.* **1984**, *49*, 1246–1251.
- Ojika, M.; Qi, J.; Kito, Y.; Sakagami, Y. *Tetrahedron: Asymmetry* **2007**, *18*, 1763–1765.